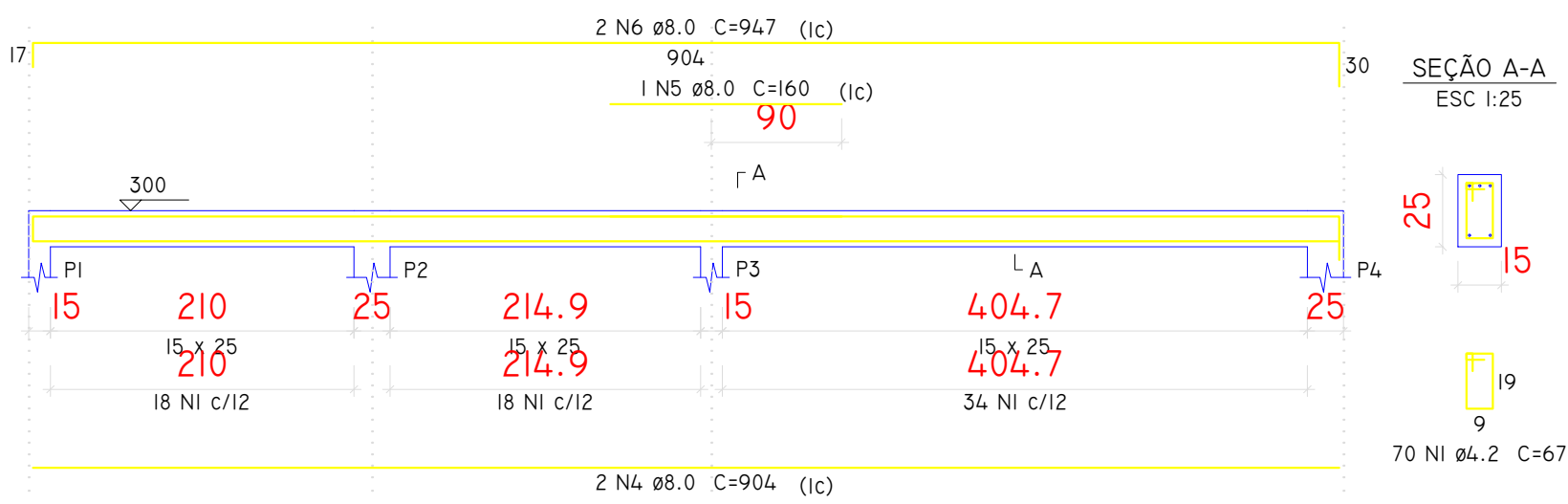


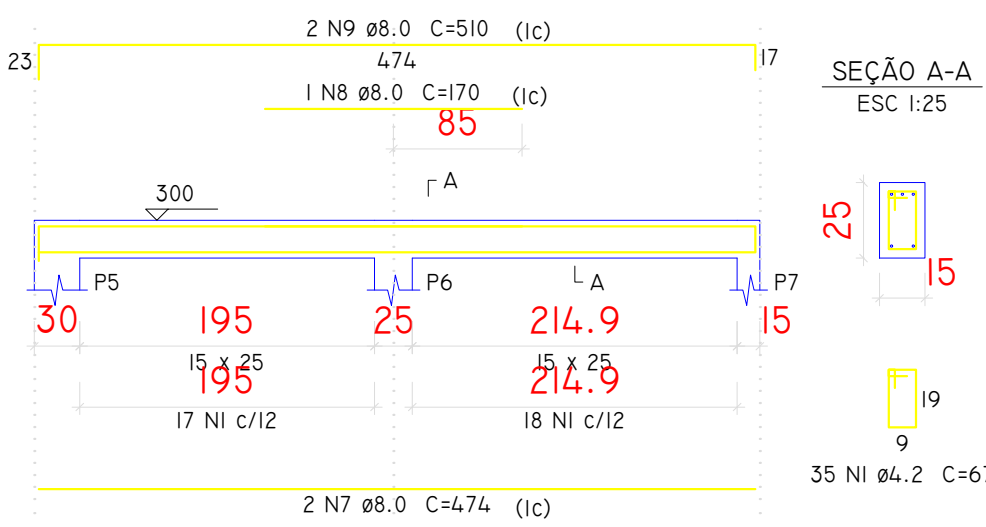
VT1

ESC 1:50



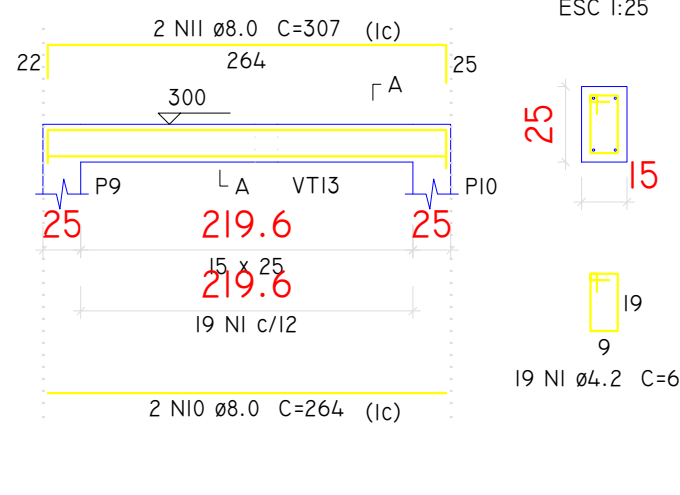
VT2

ESC 1:50



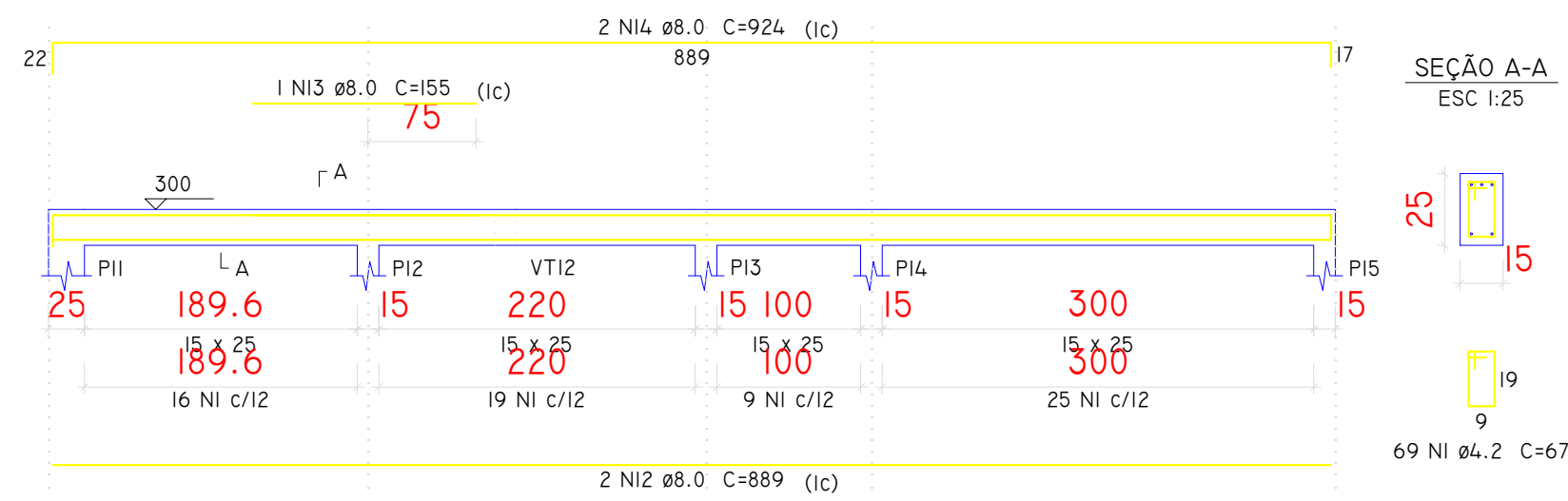
VT3

ESC 1:50



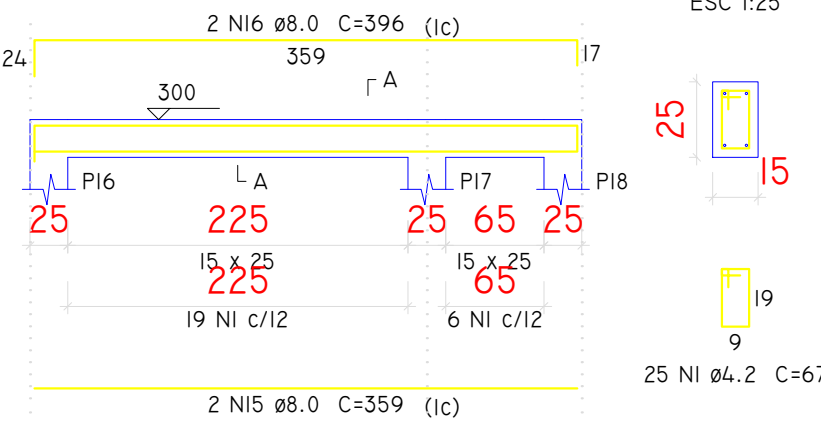
VT4

ESC 1:50



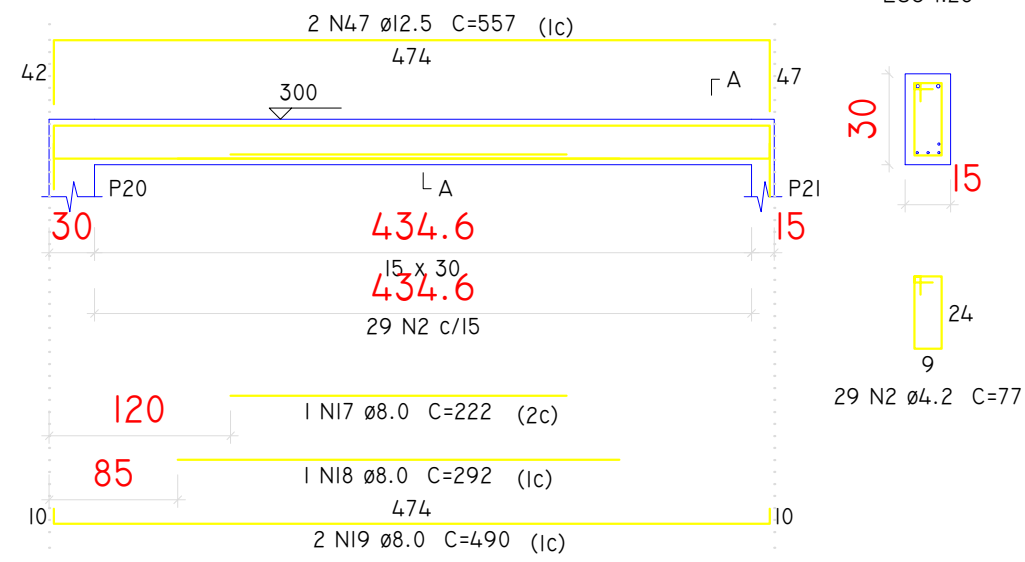
VT5

ESC 1:50



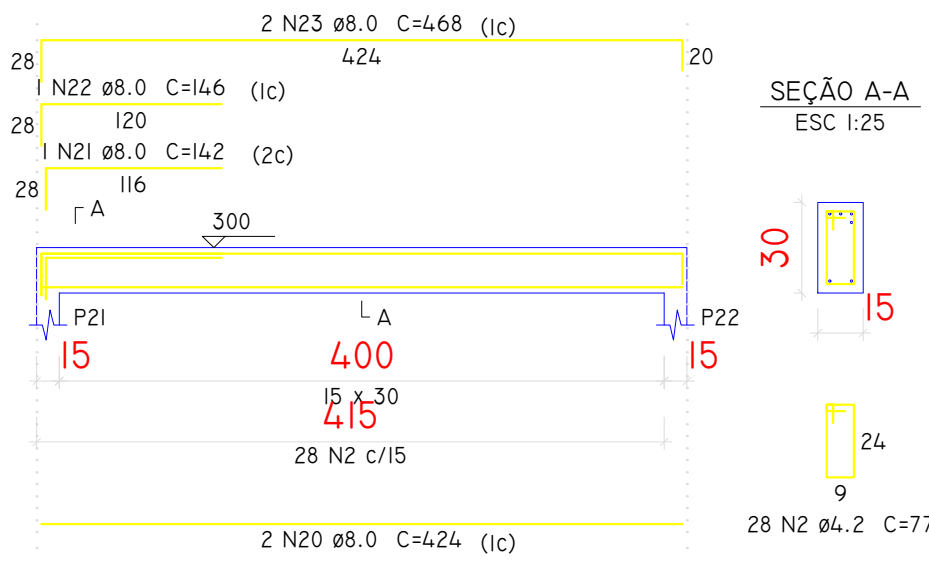
VT6

ESC 1:50



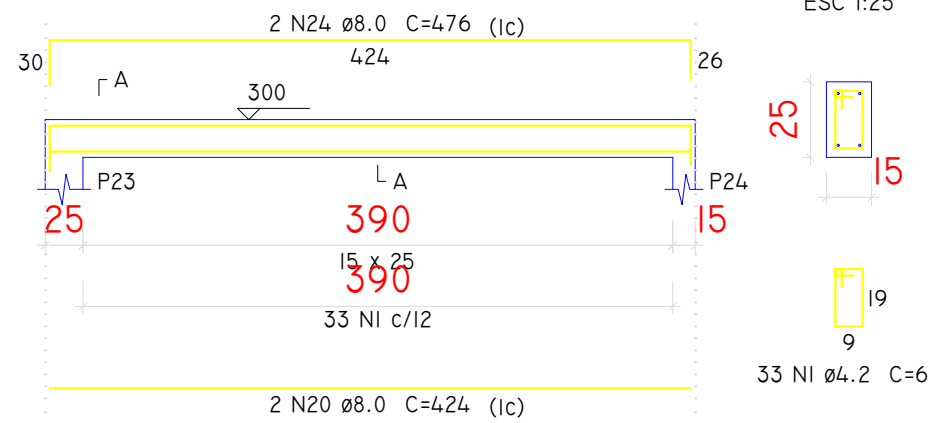
VT7

ESC 1:50



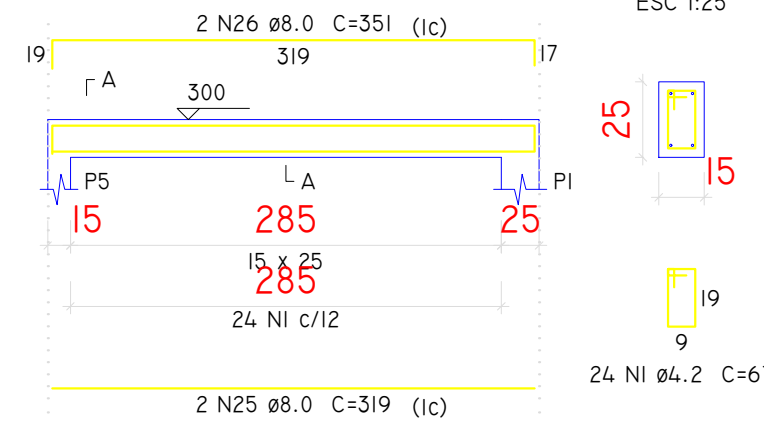
VT8

ESC 1:50



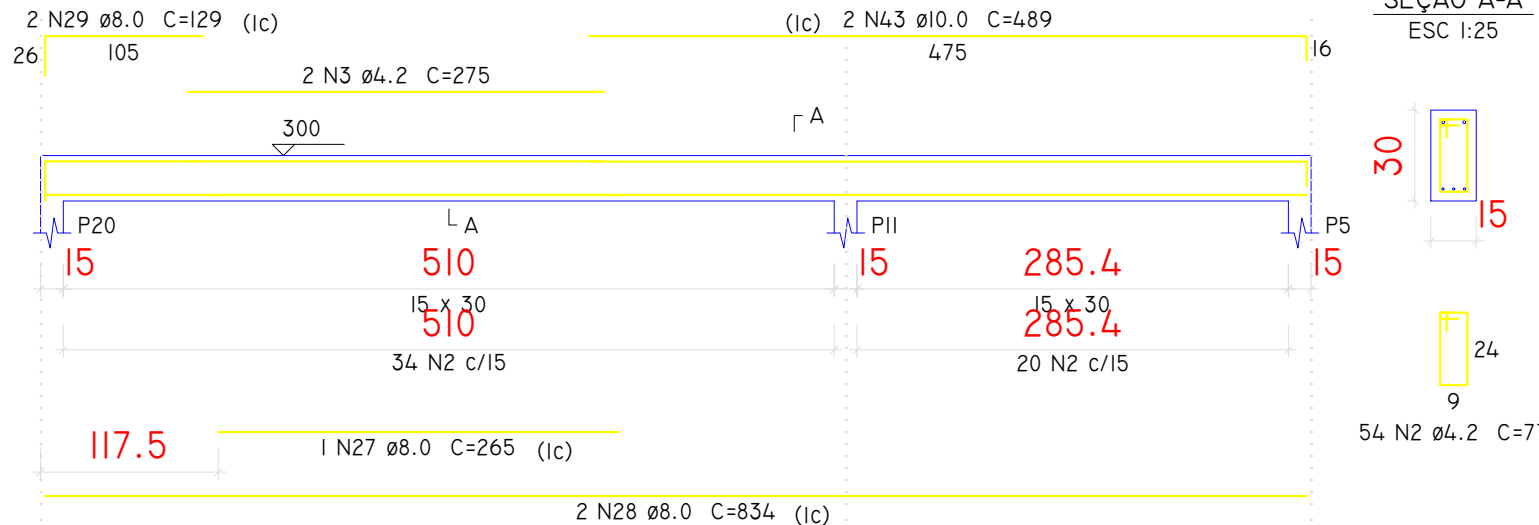
VT9

ESC 1:50



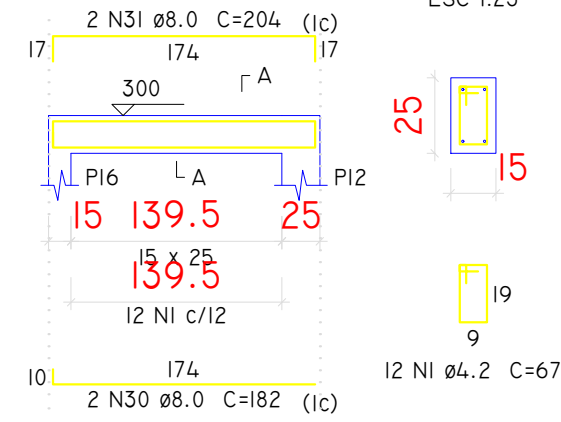
VT10

ESC 1:50



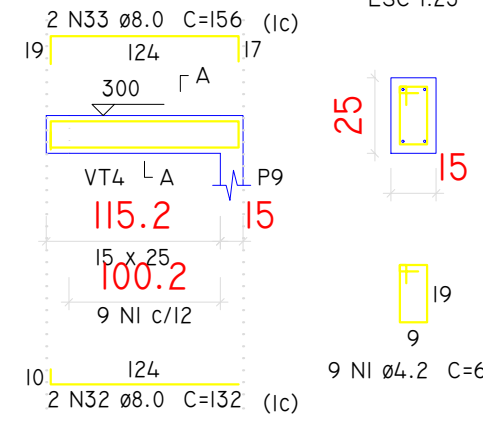
VT11

ESC 1:50



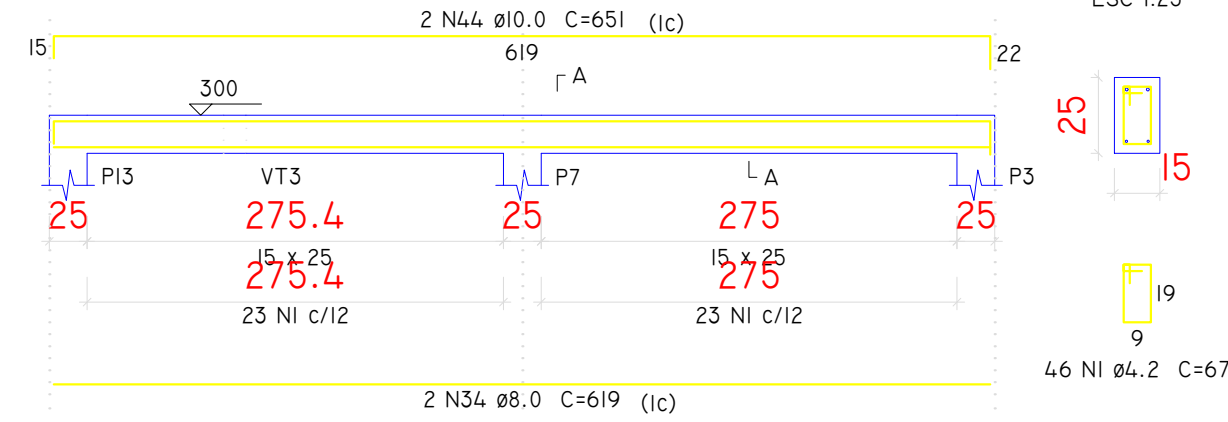
VT12

ESC 1:50



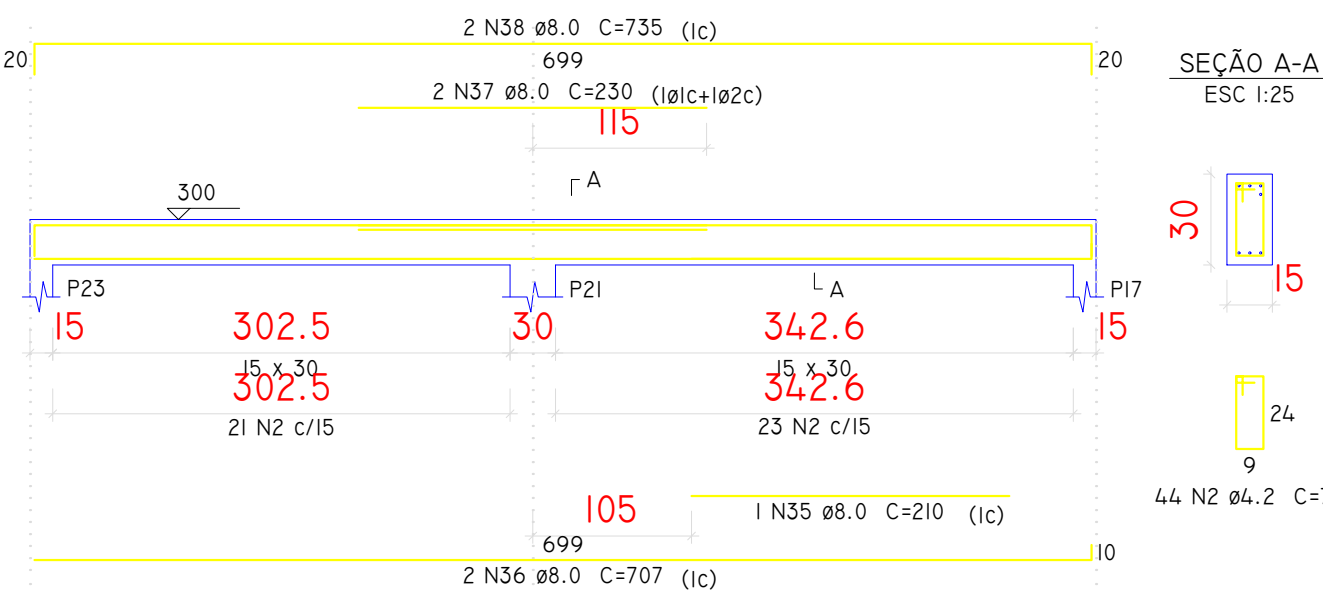
VT13

ESC 1:50



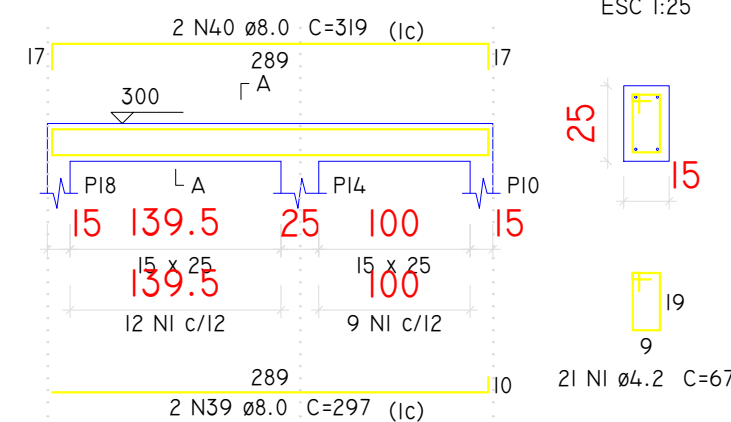
VT14

ESC 1:50



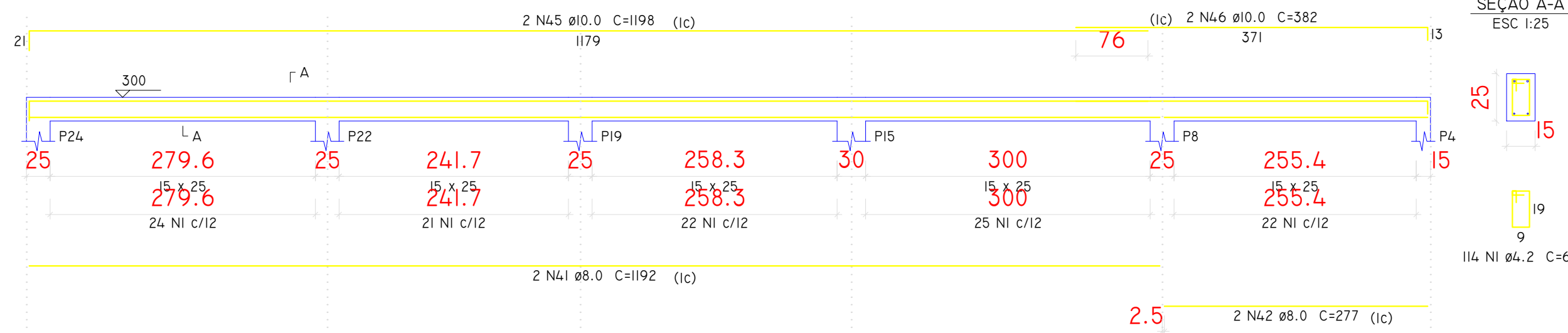
VT15

ESC 1:50



VT16

ESC 1:50



## RELAÇÃO DO AÇO

VT1	VT2	VT3			
VT4	VT5	VT6			
VT7	VT8	VT9			
VT10	VT11	VT12			
VT13	VT14	VT15			
VT16					
AÇO	N	DIAM (mm)	QUANT	C.UNIT (cm)	C.TOTAL (cm)
CA60	1	4.2	477	67	31959
	2	4.2	155	77	11935
	3	4.2	2	275	550
CA50	4	8.0	2	904	1808
	5	8.0	1	160	160
	6	8.0	2	947	1894
	7	8.0	2	474	948
	8	8.0	1	170	170
	9	8.0	2	510	1020
	10	8.0	2	264	528
	11	8.0	2	307	614
	12	8.0	2	889	1778
	13	8.0	1	155	155
	14	8.0	2	924	1848
	15	8.0	2	359	718
	16	8.0	2	396	792
	17	8.0	1	222	222
	18	8.0	1	292	292
	19	8.0	2	490	980
	20	8.0	4	424	1696
	21	8.0	1	142	142
	22	8.0	1	146	146
	23	8.0	2	468	936
24	8.0	2	476	952	
25	8.0	2	319	638	
26	8.0	2	351	702	
27	8.0	1	265	265	
28	8.0	2	834	1668	
29	8.0	2	129	258	
30	8.0	2	182	364	
31	8.0	2	204	408	
32	8.0	2	132	264	
33	8.0	2	156	312	
34	8.0	2	619	1238	
35	8.0	1	210	210	
36	8.0	2	707	1414	
37	8.0	2	230	460	
38	8.0	2	735	1470	
39	8.0	2	297	594	
40	8.0	2	319	638	
41	8.0	2	1192	2384	
42	8.0	2	277	554	
43	10.0	2	489	978	
44	10.0	2	651	1302	
45	10.0	2	1198	2396	
46	10.0	2	382	764	
47	12.5	2	557	1114	

## RESUMO DO AÇO

AÇO	DIAM (MM)	C.TOTAL (M)	PESO + 10 % (kg)
CA50	8.0	316.4	137.3
	10.0	54.4	36.9
	12.5	11.2	11.8
CA60	4.2	444.5	53.2
PESO TOTAL (kg)			
CA50	186		
CA60	53.2		

VOLUME DE CONCRETO (C-25) = 3.5 M<sup>3</sup>  
ÁREA DE FORMA = 59.9 M<sup>2</sup>

PROJETO:	<b>ESTRUTURAL</b>	FRANCHA:	<b>EST-02/02</b>
RESPONSÁVEL TÉCNICO:	ANTONIO VINCENTI ENGENHEIRO CIVIL CREA - 10382 D/P/R	PREFEITO / GESTÃO:	ANTONELY C. A. DE CARVALHO 2017/2020
DATA:	AGOSTO 2017	DESENHO:	ADILSON BERNARDES
		OBRA:	REFORMA E AMPLIAÇÃO DO HOSPITAL MUNICIPAL DE IBAITI